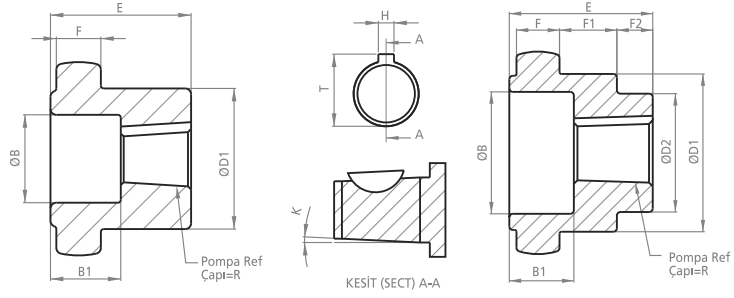


# DK24

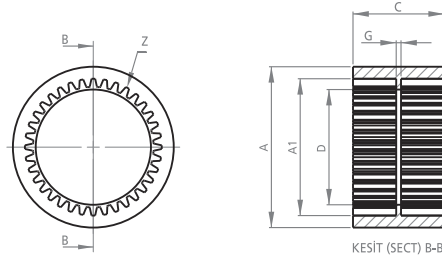
## KAPLİN

## COUPLING

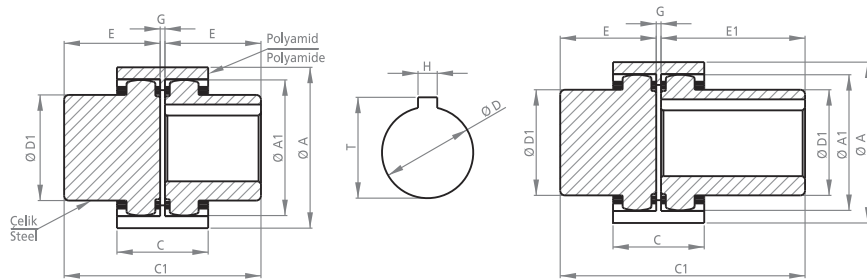


### POMPA MİLİNE GÖRE İŞLENMİŞ KAPLİNLER PROCESSED COUPLINGS PUMP SHAFT

KOD CODE	B	B1	D1	D2	E	F	F1	F2	H	K	R	T	Z
DK240PD03	-	-	36	-	28	9.5	-	-	3.20	-	13.45	15.05	27
DK240PK03	22	16	36	23	28	9.5	11.5	5	2.50	1/8	9.50	10.75	27
DK24-1P03	28	11	36	-	28	9.5	-	-	4.00	1/8	16.66	18.66	27
DK24-1P03T	28	11	36	-	28	9.5	-	-	3.20	1/8	16.66	18.26	27
DK24-SAE-A-03	-	-	36	-	28	9.5	-	-	5.00	-	19.05	21.55	27



KOD CODE	A	A1	C	D	G	Z
DK2402	53	44	37	38	5	27



### MOTOR MİLİNE GÖRE İŞLENMİŞ KAPLİNLER PROCESSED COUPLINGS MOTOR SHAFT

KOD CODE	A	A1	C	C1	D	D1	E	E1	G	H	T	Z
DK2403	53	44.3	37	58	-	36	28	-	2	-	-	27
DK241103	53	44.3	37	58	11	36	28	-	2	4	13	27
DK241403	53	44.3	37	58	14	36	28	-	2	5	16.5	27
DK241903	53	44.3	37	58	19	36	28	-	2	6	22	27
DK242403	53	44.3	37	58	24	36	28	-	2	8	28	27
UDK2403	53	44.3	37	70	-	36	28	40	2	-	-	27
UDK241103	53	44.3	37	70	11	36	28	40	2	4	13	27
UDK241403	53	44.3	37	70	14	36	28	40	2	5	16.5	27
UDK241903	53	44.3	37	70	19	36	28	40	2	6	22	27
UDK242403	53	44.3	37	70	24	36	28	40	2	8	28	27

Motor Mil Çapları için  
sayfa 26'ya bakınız.  
Look at the paper 26 for  
Motor Shaft Diameters.

TOLERANSLAR MİL ÖLÇÜLERİNDE: -0 +0.05, DİĞER ÖLÇÜLERDE: ±0.15  
TOLERANCES SHAFT DIMENSIONS: -0 +0.05, OTHER DIMENSIONS: ±0.15  
Tasarım Tescil No Design Registration Certificate Number: 2001 01950

ESMAKSAN®

Khazini®

EMS  
ESMAKSAN